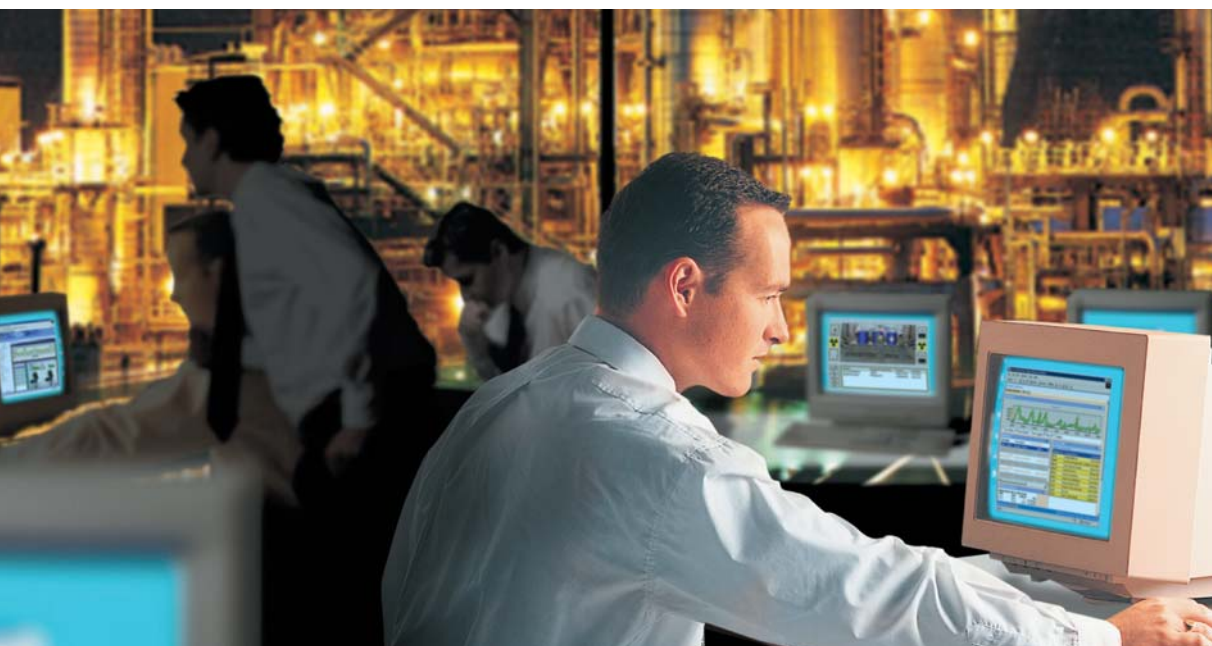


Plant Intelligence Portal



- ⚙️ *Improve Plant Operations*
- ⚙️ *Enable Plant Team Members*
- ⚙️ *Secure and Personalize Delivery of Real-Time Plant Information*



PRODUCT HIGHLIGHTS

- Highly Extensible
- Easy to Use and Deploy
- Integrated Security
- Web Services and Web-Part Enabled
- Personalization and Customization

The powerful SuiteVoyager plant intelligence portal can improve business performance through tailored delivery of real-time and historical process information throughout the company with a Web browser. SuiteVoyager software organizes, secures and personalizes information, and gives users tools to view that information in a useful format for quick analysis. Access to plant intelligence when it's needed enables companies to make better decisions and optimize business practices. The SuiteVoyager plant intelligence portal contributes to a greater return on investment by enabling a company to visualize, analyze and optimize existing plant processes—anytime, anywhere—for better decision-making.

Improving Plant Performance

Over the past few decades, companies have been implementing best-of-breed software solutions for acquiring plant information and

automating processes. A company may have databases in the maintenance and quality offices, HMIs (human-machine interfaces) on the plant floor, a historian in the plant manager's office, Web-enabled devices embedded in the equipment and much more. Integrating these "islands of data" throughout the organization was a costly and time-consuming process. It was difficult to repeatedly obtain real-time information and reports from anywhere in the plant.

Visualize

The SuiteVoyager plant intelligence portal eliminates the problems associated with obtaining scattered, disjointed real-time plant information. It displays information from anywhere in the organization in one, centralized location, saving valuable time for the plant personnel who need the information, the IT department and the software maintenance staff. SuiteVoyager software also offers the following essential features for the manufacturing environment:

- Security – Administrators can selectively grant users access to information
- Organization – Users can quickly and easily locate the information they need
- Personalization – Users have their own view into the information important to them



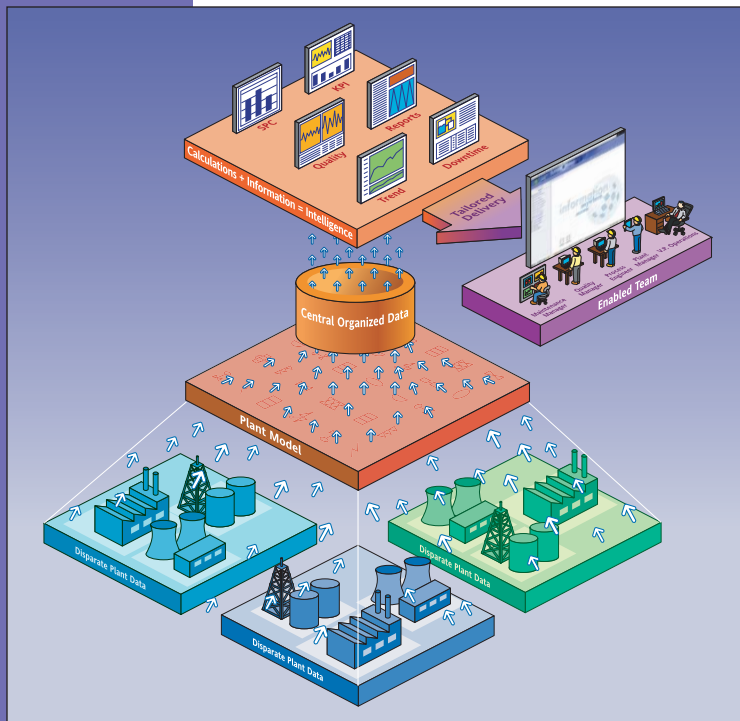
Powering intelligent plant decisions in real time.

In essence, Wonderware's SuiteVoyager portal provides secure access to a plant's information in an organized, personalized format, from the convenience of an Internet browser.

Analyze

Plant data is useless without context. That's why simply viewing information is not enough. SuiteVoyager software allows plant employees to analyze a plant's real-time and historical information with the most appropriate client tool. Charts, trends, spreadsheets and Web-enabled applications can all be used to transform plant data into intelligence.

In fact, any information that can be displayed over a Web browser can be embedded into the SuiteVoyager portal to provide plant intelligence.



Plant Intelligence: Visualize, Analyze, Optimize

Optimize

Today, manufacturers are under tremendous pressure to react to customers' ever-changing needs, improve production efficiency, manage costs and maximize profits. Meeting these demands requires a plant intelligence system that:

- Conveys summary, analytical and real-time status information to the people who need it, when they need it
- Provides visibility into all plant information
- Transforms plant data into plant intelligence

- Gives users the control capabilities they need to immediately rectify any problems that they identify

The SuiteVoyager portal is vital to a manufacturer's overall plant intelligence system because it empowers everyone in the plant to aspire for and achieve a common goal.

Personal Delivery of Plant Information

The SuiteVoyager portal provides access to the vast amount of information a plant produces each day. The information in SuiteVoyager can come from:

- Wonderware's FactorySuite® software products
- Web parts created by Microsoft or any third-party software vendor
- Web-based applications
- Reports, documents and drawings in HTML format
- Virtually anything designed to be viewed over a browser

Therefore, plant employees can view the plant's real-time and historical information using the analysis tools best for the situation. This enables them to make better decisions, quicker – and make immediate process adjustments if they detect anything that requires modification.

Visualization & Analysis Tools

The SuiteVoyager portal consists of several visualization and analysis tools for real-time information from Wonderware's InTouch HMI, IndustrialSQL Server historian, I/O Servers and the new FactorySuite A^{2™} Industrial Application Server. The SuiteVoyager portal administrator can also grant control privileges to users who need remote access to InTouch and Industrial Application Server applications.



Real Time and Historical Plant Information.

In addition, SuiteVoyager software includes a Web service called the SQL Data Provider, which facilitates access to database information. A Web service is a new communication protocol that enables XML (Extensible Mark-up Language) transmissions between Web servers. The SQL Data Provider Web Service provides access to information from any ADO/ODBC-compliant database, located anywhere in the plant, on the plant's network or on the Internet to the SuiteVoyager portal. Because it is a Web service, data can be retrieved quickly and securely over the Internet/intranet using standard TCP/IP communication, keeping network traffic low.

Web-Part Container

The SuiteVoyager portal also serves as a Web-part container, which presents tremendous opportunities for using additional software applications. A Web part is software code, similar to an ActiveX® control, which can connect to, display and enable analysis of information through a Web browser.

All of the FactorySuite visualization and analysis tools in the SuiteVoyager portal work as Web parts. In addition, there are hundreds of Microsoft_ and third-party Web parts that can be used in the SuiteVoyager portal.

Web-Based Applications & Information

Any software application that has been designed for the Web, or any component that can be displayed through an Internet Explorer browser, can be accessed through the SuiteVoyager portal. Reports, drawings or documents saved in Web format, ASP and HTML pages can also be viewed through the portal, vastly extending the amount of information that can be accessed.

The SuiteVoyager portal provides an open platform from which a company can display all of the information important to them, regardless of the source.

Integrate Disparate Data

Wonderware understands that most manufacturers struggle to integrate the disparate data sources that reside in their plants. The SuiteVoyager plant intelligence portal excels at integrating data and giving plant employees access to the information they need, whenever they need it, in one centralized, organized location. In today's economy, manufacturing organizations can't afford to waste valuable time and resources on excavating plant information. Wonderware's SuiteVoyager portal eliminates those hassles, empowering users to make better plant decisions.

Ease of Use

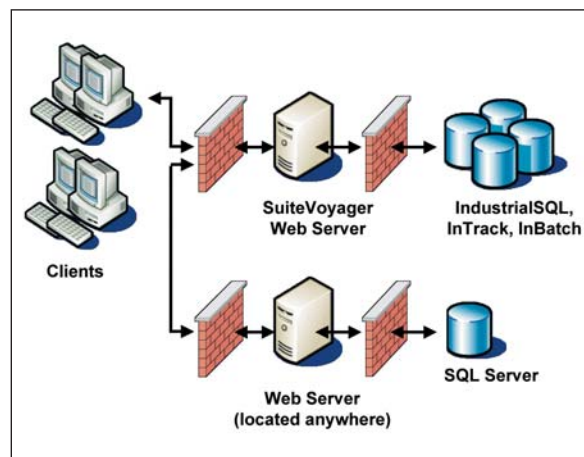
SuiteVoyager software enables plant personnel to quickly build a plant intelligence portal by providing the entire portal framework, home page and configuration tools out of the box. The SuiteVoyager installation builds the entire portal infrastructure. From the portal home page, portal administrators can easily point and click to configure the portal and instantly obtain real-time and historical plant information. In fact, the SuiteVoyager portal was designed to be configured by users with no programming knowledge.

Portal Personalization

Wonderware understands that plant personnel frequently use the same portal for different reasons. Maintenance staff may use it to create detailed equipment drawings and downtime reports, while the VP of Operations may want to review plant efficiency information from various manufacturing lines and plants. The SuiteVoyager portal administrator accesses the plant's data and creates the information in the portal once, then drags and drops the links to custom panels that provide views for the users. This "intelligent linking" system eliminates the need to duplicate or replicate information in multiple places. Portal personalization enables SuiteVoyager users to quickly access the information they need, precisely how they prefer to view it.

Integrated Security

Of course, tight security is essential to any portal. Wonderware developed the SuiteVoyager portal with safeguards designed to protect information from unauthorized access, prevent users without privileges from performing certain functions and keep plant information safe.



Secure access to information.

Wonderware built several layers of security into the SuiteVoyager portal to protect against unauthorized access and process control:

- Integrated Microsoft Windows NT™ Authentication – Users must be authenticated before they can use the SuiteVoyager portal.
- Secure Sockets Layer (SSL), Digital Certificates and Single Sign On Protections
- Firewall Friendly – The portal can be placed inside a DMZ (de-militarized zone).
- Portal Roles – The portal administrator assigns Read, Write and Administration privileges.
- Publishing Rights – Users must be assigned remote and local publishing privileges.

Web Services & the DMZ

The SuiteVoyager portal utilizes Web services to access database information. Web services communicate using TCP/IP, therefore, only Port 80 on a firewall must be open to transfer information. The SuiteVoyager portal can be placed inside a DMZ with two firewalls, one that protects the Web server from users accessing the portal and another that protects the plant-floor systems.

SuiteVoyager software tightly secures access and control to real-time and historical information, while empowering the administrator with the flexibility to extend portal privileges to the appropriate people.

Fast, Informative Graphics

The SuiteVoyager graphics download quickly and do not require a large amount of network bandwidth, and yet they are rich with information that users can access from several different InTouch nodes, I/O Servers and/or Industrial Application Servers. The SuiteVoyager portal encourages users to display clear, network-friendly images that display important real-time control information about the plant's processes. Performance enhancements that facilitate fast graphical information rendering and connection to data sources include XML graphical windows, dynamic sizing and portal caching.

XML Graphical Windows

The SuiteVoyager portal delivers interactive HTML pages by converting InTouch graphic windows and associated animation to XML,

applying an XSL (Extensible Style Language) transformation and rendering VML (Vector Mark-up Language) graphics on the fly at the client machine. SuiteVoyager software also automatically connects to data sources.

Dynamic Sizing

The conversion of InTouch windows to an XML format enables dynamic window scalability. In other words, when browser windows are resized, the graphics they display are dynamically resized.

Portal Caching

Portal-caching mechanisms allow the SuiteVoyager portal to quickly navigate and display information. Intelligent window-caching on both client and server result in superior display-rendering performance.

ADDITIONAL FEATURES

Centralized Software Administration & Management

SuiteVoyager software can save manufacturers significant funds because there is no need to invest in or manage costly client-side software or computers. All of the SuiteVoyager software's administration and license management is performed on the Web server.

Multi-View Windows

SuiteVoyager Multi-View windows allow for the simultaneous presentation and analysis of information from many application sources—all in one window.



MultiView window

Chart & Data Table Applications

SuiteVoyager software provides users with Chart and Data Table applications that can be used to display database information. These applications can also be used with embedded Web services to quickly and easily transform plant data into plant intelligence.

Customization

The portal administrator can customize the SuiteVoyager software by:

- Altering the banner
- Adding a company logo
- Changing the color scheme
- Replacing the Home Page
- Adding links to published reports, documents, other websites and resources
- Creating panels that segment information to match specific requirements and the users' viewing preferences

Portal Search

The SuiteVoyager portal comes standard with smart search capabilities, enabling users to locate tags published throughout the portal.

Concurrent Client Licensing

The SuiteVoyager portal supports concurrent client user licensing. When a client tries to access SuiteVoyager, the SuiteVoyager license manager checks to see if a client license is available and grants or denies access depending on availability.

License Information Management

Since licensing resides on the portal, the SuiteVoyager software provides an easy-to-use license management system that allows the administrator to monitor activity on the portal. A license historian provides information about past usage and helps the administrator provide licenses to everyone who needs one.

Multilingual Support

The SuiteVoyager portal detects the language of the browser client and automatically displays the portal text in that language. Languages supported include English, German, French, Simplified Chinese and Japanese.



FactorySuite Advanced Clients for Plant Intelligence

The SuiteVoyager portal also supports the inclusion of Wonderware's FactorySuite advanced client tools—ActiveFactory™, QI Analyst™ and DT Analyst™ software—for reporting, trending, SPC and downtime analysis.

SUITEVOYAGER DEVELOPER EDITION

The SuiteVoyager Developer Edition is a separate product that consists of the Application Toolkit and the Web Service Toolkit. The Application Toolkit enables programmers to create applications that can be embedded directly into a SuiteVoyager portal. The Web Service toolkit allows programmers to create Web services that can be used by any SuiteVoyager application. These toolkits give companies the ability to customize their plant information and applications to fit their unique needs.

SPECIFICATIONS

Required Hardware

- 700 MHz Pentium II
- 256 MB RAM
- 2 GB Disk Space (NTFS required)
- Super VGA monitor with 256 colors and 800 x 600 or higher pixel resolution

Recommended Hardware

- 1 GHz Pentium 4 or better
- 1 GB of RAM
- 10 GB of disk space or more (depending on the number of InTouch windows published to the portal)
- Super VGA monitor with 24-bit color and 1024 x 768 pixel resolution

Suggested Internet Connection

- 5 Users: Modem 28.8K
- 10 Users: Dedicated Digital 56K
- 20 Users: ISDN 128K
- 56 Users: T1 1.5 M
- 4,500 Users: T3
- 15,000 Users: ATM OC3 155 M

Server Software Requirements

- Microsoft Windows_ 2000 Server* or Advanced Server*
- Microsoft Internet Information Server 5.0
- Microsoft Internet Explorer 6.0*
- Microsoft SQL Server 2000* installed somewhere on the local network

Client Software Requirements

- Microsoft Windows 98
- Microsoft Windows ME
- Microsoft Windows NT 4.0
- Microsoft Windows 2000
- Microsoft Windows XP
- Microsoft Windows 2003
- Microsoft Internet Explorer 5.5+

Data Providers

- InTouch Version 7.1, 7.11 and 8.0
- IndustrialSQL Server Versions 7.1 and 8.0
- Industrial Application Server 1.0
- AlarmSuite Version 7.1 and 8.0
- Any DDE or SuiteLink™ I/O Server
- Any ADO/ODBC-compliant database

*with the latest service and security packs applied

Contact Wonderware or your local Distributor for information about software products for industrial automation.
Wonderware Corporation • 26561 Rancho Parkway South, Lake Forest, CA 92630 • Tel: (949) 727-3200 • Fax: (949) 727-3270
www.wonderware.com

©2003 Invensys Systems, Inc. All rights reserved. No part of the material protected by this copyright may be reproduced or utilized in any form or by any means, electronic or mechanical, including photocopying, recording, broadcasting, or by any information storage and retrieval system, without permission in writing from Invensys Systems Inc.

Wonderware, ActiveFactory, ArchestrA, Avantis, DT Analyst, FactoryFocus, FactoryOffice, FactorySuite, FactorySuite A², InBatch, InControl, InTouch, IndustrialRAD, IndustrialSQL Server, MaintenanceSuite, MuniSuite, QI Analyst, SCADAAlarm, SCADASuite, SuiteLink, and SuiteVoyager are trademarks of Invensys plc.

Microsoft and Windows are registered trademarks of Microsoft Corporation. All other brands may be trademarks of their respective owners.

PN 15-0070

Rev. 7/03