



Communication

I/O Servers

Product Position

With the introduction of FactorySuite™ 2000, Wonderware® sets a new standard for data communication for industrial automation software. In addition to being OPC (OLE for Process Control) compliant, FactorySuite also supports SuiteLink, which is a high-speed communications protocol used between FactorySuite 2000 components.

FactorySuite 2000 supports OPC, the emerging open standard interface for Windows® data acquisition programs. Wonderware's new OPC client, known as OPCLink, enables communications with in-process and out-of-process OPC servers. OPCLink allows remote browsing of the name space of OPC servers, thus facilitating the setup of OPC communications even over the network.

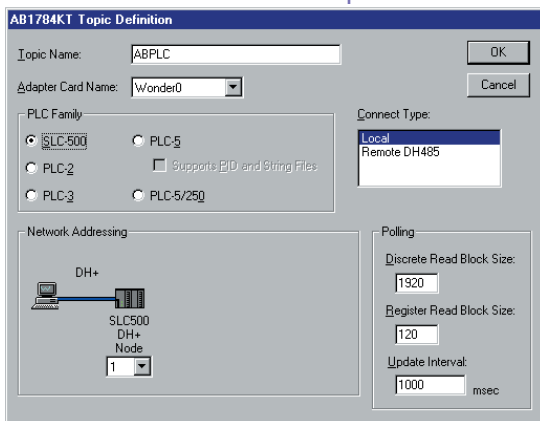
SuiteLink is Wonderware's new high-speed communications protocol. Based on TCP/IP, the de facto industry standard for network communications, SuiteLink provides highly reliable, performance-optimized data communication in the Windows NT™ environment for high throughput, peer-to-peer communications between the components of FactorySuite 2000. SuiteLink also adds the support for Value, Time stamp, and Quality (VTQ), which is especially important for alarming, historical archiving and SCADA applications.

Of course, FactorySuite 2000 still supports DDE, which was the original event-driven communication from the actual device to the final application, as well as fastDDE to allow users to share data between different applications running in a Windows environment. Wonderware's NetDDE, which was licensed by Microsoft® can still be used to transfer data between nodes over a network.

I/O Servers

PRODUCT DATA SHEET

A wide range of 32- and 16-bit I/O servers are available from Wonderware as well as third-party developers for hundreds of the most popular control devices, including Allen-Bradley, Siemens, and Modicon.



Applications

FactorySuite 2000 includes an impressive library of 32- and 16-bit Wonderware I/O Servers for interfacing to a broad range of control and sensor devices on the plant floor...and beyond. More than 600 servers are currently available from Wonderware and over 100 partner companies, providing connections to PLCs, RTUs, DCSs, flow controllers, loop controllers, scales, gauges, bar code readers and other hardware devices from the biggest names in industrial automation including Allen-Bradley, Siemens, Modicon, and many others. Hardware devices can also be connected through InControl™ connectivity to SDS, DeviceNet, Interbus-S, Profibus DP and much more since InControl itself is an integrated I/O Server.

New I/O Servers are frequently added to our server library. A current listing of servers is available on the Wonderware corporate web site. If by chance we don't have a server for your particular device, you can quickly develop your own custom solution with our FactorySuite 2000 I/O Server Toolkit. What this means is that every device—on the factory floor or in the field—can connect to Wonderware applications, providing a smooth, uninterrupted flow of data.

Features and Benefits

- **OPC.** Wonderware supports the OLE for Process Control Specification with the introduction of OPCLink. FactorySuite components can function as OPC clients and can be used with any OPC server.
- **SuiteLink.** SuiteLink protocol provides highly reliable, performance-optimized data communication in the Windows NT environment. The support of time stamps and quality allows the deployment of large distributed systems without losing control over any individual data point.
- **DDE.** Wonderware will always offer legacy support for Microsoft DDE and Wonderware fastDDE protocols. In fact, Wonderware has added time stamp and quality support to the fastDDE protocol to allow seamless integration of Windows 95 view nodes.
- **SECS-II/GEM.** Wonderware now supports this semiconductor market driven open interface with the release of SECS-II/GEM 'Host Kit' or 'Equipment Kit'. The Host and Equipment Kits are implemented as ActiveX controls. An ActiveX control can be dropped into InTouch 7.0 or VB and is controlled through methods, properties, and events. If InTouch is used as the client, it will pass data directly to/from the InTouch tagname database via the Idea Toolkit.

Host Kit is intended for customers who operate fabrication facilities using Wonderware's FactorySuite automation software. The Host Kit is able to communicate with many Tools (equipment) simultaneously through both SECS-I (serial RS-232) and HSMS-SS (TCP/IP) protocols. The Equipment Kit is used as a drop-in addition to InTouch by original equipment manufacturers (OEMs) that want an easy way to add GEM-compliant SECS-II capability to equipment that uses InTouch as an operator faceplate with standard I/O servers communicating to any on-board PLCs.

Integration With FactorySuite 2000 Components

I/O Servers are the lifeblood of FactorySuite. They allow hardware devices to communicate to the FactorySuite.

Connectivity

More than 600 servers are currently available from Wonderware and over 100 partner companies, providing connections to PLCs, RTUs, DCSs, flow controllers, loop controllers, scales, gauges, bar code readers and other hardware devices from the biggest names in industrial automation. Allen-Bradley, Siemens, Modicon, and many others. Hardware devices can also be connected through InControl connectivity to SDS, DeviceNet, Interbus-S, Profibus DP and much more since InControl itself is an integrated I/O Server.

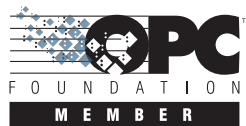
Specifications

Hardware Required:

100 MHz Pentium with a minimum of 32 MB RAM

O/S Required:

Microsoft Windows NT/98/95



© 1999 Wonderware Corporation. All rights reserved. Wonderware and InTouch are registered trademarks of Wonderware Corporation. Wonderware FactorySuite, InControl, InTrack, InBatch, FactorySuite WebServer, FactoryFocus, IndustrialSQL Server and FactoryOffice are trademarks of Wonderware Corporation. Microsoft is a registered trademark of Microsoft Corporation. All other trademarks are the property of their respective owners.

Contact Wonderware or your local Distributor for information about software products for industrial automation.
Wonderware Corporation • 100 Technology Dr. • Irvine, CA • 92618 • Tel: (949) 727-3200 • Fax: (949) 727-3270
www.wonderware.com

PN 15-0018 Rel. 9/99