

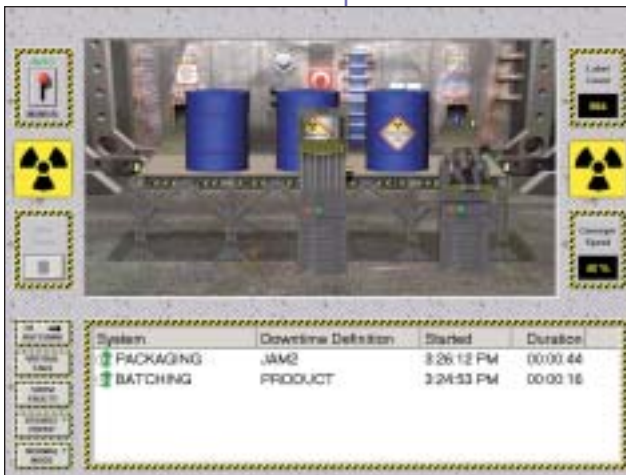


# InTouch® 7.11

Process Visualization

## PRODUCT POSITION

Wonderware® InTouch® 7.11 for FactorySuite® provides the visualization for a plant-centric, operator-centric manufacturing information system—where information is shared within and between plants—fully integrated with all types of information needed to empower the operator.



## APPLICATIONS

Wonderware InTouch 7.11 was again confirmed as the market leader in HMI by ARC research with 22% of the worldwide market. More than 180,000 installations of InTouch 7.11 are in use around the world producing dramatic results. Users report lower project and life cycle costs and improved production in both quality and quantity. Add-on components such as Recipe, QI Analyst and DT Analyst help users satisfy a variety of industry reporting requirements. Close integration with Wonderware's MES, Batch and Historian products provide the versatility demanded by today's manufacturing

operations... all from a single-source. Our newest release of Wonderware InTouch 7.11 continues our commitment that current InTouch applications will run on future software versions, protecting your investment in time, energy and money.

Wonderware InTouch applications span the globe in a multitude of vertical markets including food processing, semiconductors, oil and gas, automotive, chemical, pharmaceutical, pulp and paper, transportation, utilities and more.

## InTouch® 7.11 PRODUCT DATASHEET

Wonderware® InTouch® 7.11 for FactorySuite® is the world's leading, easiest to use, graphical human-machine interface (HMI) for industrial automation, process control and supervisory monitoring.

## FEATURES AND BENEFITS

Wonderware InTouch 7.11 is comprised of several components that perform visualization, design and presentation, data access extensibility to external components/systems, history, event handling, alarm logging, and reporting and analysis tools. Wonderware InTouch 7.11 has long set the standard for ease of development to allow users to create complex and powerful operator interface displays quickly and easily.

### ■ OPEN AND ACCESSIBLE DEVELOPMENT ENVIRONMENT

Wonderware has taken advantage of our past standards in communication technology and married them with Microsoft® technologies of the future, bringing the application developer a more open and accessible development environment. InTouch 7.11 gives the user access to all the latest tools, including ActiveX, OPC, Wonderware's SuiteLink™, and

standard DDE.

Wonderware InTouch 7.11 is an ActiveX container. It allows an InTouch user to install third-party ActiveX controls and use them in any application window with simple point-and-click configuration—no programming required! For easy access to installed ActiveX controls, any operator can add them to their WindowMaker. ActiveX controls can be used to handle control events, call control methods and set and get control properties all from InTouch QuickScripts. ActiveX control properties can also be associated directly to InTouch tagnames.

### Device Integration (I/O)

Wonderware and more than 100 third party product developers together offer the largest selection of 32-bit I/O servers for hundreds of the most popular control devices, including Allen-Bradley, Siemens, Modicon, Opto 22, Square D and more. All Wonderware servers provide Microsoft DDE communication, as well as Wonderware's SuiteLink protocol to any Windows application. The FactorySuite Toolkit allows users to develop new or proprietary I/O or SuiteLink servers as well. Wonderware supports OLE for Process Control Specification. In Touch 7.11, and all other FactorySuite components, is capable of being an OPC client for use with any OPC server. SuiteLink, Wonderware's new communication protocol, allows application level commands (reads, writes and updates) and their associated data to be passed between clients and I/O Servers.

### IndustrialSQL Server™ (InSQL)

InTouch's WindowViewer allows users access to system tags provided by InSQL to monitor system health. You can configure WindowViewer to generate an alarm when abnormal behavior is detected within the InSQL system. InSQL Server allows applications such as InTouch to access current data values ("live" data) very easily without the need for SQL access, in essence InSQL acts as its own I/O Server.

### IndustrialSQL Tag Browser

Browse InSQL tags directly from InTouch 7.11. When choosing a tag for a trend pen name in a system configured for IndustrialSQL History, a dialog will be invoked that allows the user to browse the IndustrialSQL namespace.

### IndustrialSQL ActiveX Controls

ActiveFactory™ provides many ActiveX controls for interfacing applications to the rich data store of IndustrialSQL. With these objects, application developers can access and display data from InSQL quickly and easily. These controls can be used in any ActiveX container such as InTouch 7.11 and are fully Internet compatible.

- ▼ ActiveDataGrid can be used to execute any SQL query that returns a result set from any SQL Server(s) database.
- ▼ IQuery provides a dynamic tool to build and execute IndustrialSQL queries from within the container. Queries may be interactively modified and re-executed by the user at runtime.
- ▼ ActiveGraph or iTrend can be used to retrieve historical data from one or more InSQL database and then plots trends for the tag values. Both objects are full-featured graphing tools supporting cursors, panning, zooming, etc.
- ▼ ActiveTagBrowser allows hierarchical viewing of objects using a browser format: I/O Servers, tags, events, etc.
- ▼ ActiveTimeSelector is used to view and select historical data for a specified time period.

### SuperTags TemplateMaker

A SuperTag is a structure of tags that allow users to map InTouch tags to tag structures in a control system. The SuperTags TemplateMaker allows an application developer to create, modify and delete custom SuperTag templates. SuperTag templates can be defined with up to 64 members.

## ■ ARCHITECTURE – EASIER DEPLOYMENT AND MAINTENANCE OF THE SYSTEM

### Automatic Application Backup

When existing applications require conversion to run on newer versions of InTouch, this backup feature protects the older application on the previous software version from being overwritten. If necessary, the user can revert to the Backup Directory.

## Dynamic Network Application Development (NAD)

NAD allows a master copy of an InTouch application to be maintained in a central network server. Each View node loads the network application from the server. The application is copied to the View node and run from a user-defined location. If the master node is unavailable, the WindowViewer node keeps working—using the stored application. Reconnections after the master reappears are transparent and seamless—updates resume! NAD can be configured to accept changes without shutting down. Only the windows that were changed are re-compiled.

## Terminal Server Support

InTouch 7.11 is also available in a Terminal Services edition. Wonderware has pioneered the use of thin client technology and now implementation is made even easier. Terminal Services architectures permit centralized deployment, maintenance and management of software, re-use of existing hardware, high levels of security and client support for multiple operating systems including Windows CE, Embedded NT(NTE), Windows for Workgroups 3.11, 95/98/NT 3.51/4.0, 2000, Linux and Unix. Terminal Services for InTouch gives you all of the benefits of thin client technology while reducing the overall cost of ownership of a FactorySuite system.

## Tagname Browser

The Tagname Browser allows the user to select tagnames and tagname fields from any FactorySuite application, such as another InTouch node, InControl™, InBatch™, IndustrialSQL Server™, or any other tagname source that supports the InTouch Tagname Dictionary interface.

## Application Explorer

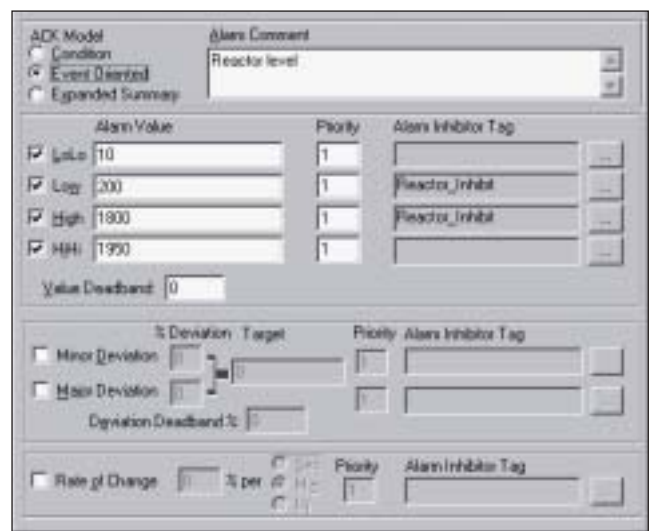
The Application Explorer adds direct access to all scripts. This allows much quicker and simpler access to script functions. All Script functions defined are displayed in the Application Explorer “Scripts” sub-tree under each respective category.

# NEW FEATURES IN INTOUCH

The latest release of InTouch 7.11 gives users many significant advantages and improvements over previous releases. A major architectural change ‘under the hood’ provides several benefits over previous versions of InTouch. The Alarm and Alarm Logging area were re-engineered to incorporate features designed for openness, longevity and performance.

## Distributed Alarm Subsystem Enhances Performance

With easy configuration and profoundly improved alarm handling performance, the new Distributed Alarm Subsystem of InTouch 7.11 greatly improves the quality of your information while reducing the configuration time. InTouch now offers three alarm acknowledgement models: ‘Traditional’ alarms are now called condition-oriented alarms; ‘Event’ alarms support compatibility with the OPC alarm model, where an acknowledgment must be for the most recent transition to an alarmed state; and ‘Expanded Summary’ alarms support acknowledgment of every individual transition into and out of an alarmed state. Dialog boxes and easy to use GUI’s make alarm configuration simple to implement.



## Alarm Flexibility

Alarms can now be enabled/disabled directly or indirectly (using ‘Alarm Inhibitor’ Tags) under full control of the Application. Alarm suppression can be applied to single Alarm classes, tags or Groups to prohibit the display of alarm information on a specific view node. System-wide disablement can block Alarm activity at the source.

## New Alarm Architecture

InTouch 7.11 introduces the concepts of Alarm Providers and Alarm Consumers. Alarm Providers are responsible for determination of Alarm conditions and publishing of Alarms to the Distributed Alarm Subsystem. Consumers are Client entities which Subscribe for and receive Alarm information from the Distributed Alarm Subsystem.

The basic Alarm communication protocol has been updated to replace the older NetDDE protocol with TCP/IP. This reduces the amount of CPU and network utilization while greatly increasing the alarm update time.

## Alarm Toolkit

The new Alarm Toolkit enables 3rd parties, Systems Integrators and end-users to enhance InTouch systems by writing custom Alarm Providers and Alarm Consumers. A hardware device interface can then be constructed and integrated into an InTouch environment and, using the Distributed Alarm Subsystem publish and subscribe for Alarms.

## SuiteLink Timestamping

Now InTouch 7.11 offers up to the millisecond timestamping of your alarms when the alarm happens, not when the alarm is received by the consumer.

## Alarm Display

The Distributed Alarm Object has been enhanced. Additional functionality can be provided to an application user to enable pre-configured (by the system designer) views to be selected at runtime, either by a simple right-click command menu or via scripting. The old Standard Alarm Display is retired and applications that implemented it are automatically upgraded the first time they are opened to use the new display.

## New Alarm Fields

A separate alarm comment field provides you with more feedback about the alarm. Expanded dot field support gives you greater control over your alarms.

## New Alarm Database and Alarm Logger

The new InTouch Distributed Alarm Subsystem supports logging alarms and events to a Microsoft SQL Server 7.0, 2000 or MDSE database. This gives you the power of a relational database regardless of the size of your application – and your budget. New visualization tools allow easy and open access to these data tables. The new Alarmlogger can be manually initiated on demand, or can be configured to run as a Windows Service. Alarm logging uses UCT (GMT) time stamping and provides compatibility with DST and across time zones.

## Alarm Database Maintenance

In Touch 7.11 provides standard database utilities to help maintain information integrity. The Purge/Archive utility can be used to ensure that the Alarm Log database is always optimized and the Alarm Database Restore utility can be used to restore archived Alarm data.

## Alarm Database Migration

Support for AlarmSuite users is still available. However to enable maximum flexibility, InTouch 7.11 now also provides migration tools from existing AlarmSuite databases to the new Alarm DB system.

## Easy to configure Hot Backup and Resynchronization

The new Distributed Alarm System allows you to configure a secondary backup Alarm Provider to establish a fail-safe system.

Alarm Provider Pairs are configured using a supplied utility. Should a primary Alarm Provider fail, the Distributed Alarm Subsystem seamlessly acquires Alarm information from the backup system. On reconnection of the Primary node, the Distributed Alarm Subsystem ensures that Alarm Acknowledgements are resynchronized prior to the returning Primary system becoming live.



## New Script Functions add additional Alarm functionality

New scripts and tag dot fields make handling of alarms even more powerful and flexible than before by allowing your applications to control alarm generation and visibility, better manipulate alarm display objects, acknowledge alarms and more.

## New Database View Control

To fully expose the information now captured within the Alarm Logger Database, a new Database View control is provided. This gives flexibility and control to the system designer and to the system operator to visualize the Alarm data stored within the new database.



## CONTINUED SUPPORT FOR THESE POPULAR FEATURES

### Graphical User Interface GUI

InTouch 7.11 allows users to quickly develop custom screens for their application using easy to understand and configure tools. A library of commonly used graphical objects enables you to create animated screens with minimal effort. In addition, linking to real-time information is simplified through the use of easy to configure wizards. And you have the ability to expand the depth of your customization by invoking the built-in Script Editor.

### Distributed History

The distributed historical trending system allows you to dynamically specify a different historical file data source for each pen of a trend chart. This allows an operator to also view both native InTouch 7.11 history and IndustrialSQL Server history in the same trend.

### Dynamic Resolution Conversion

Users can develop applications in one screen resolution and run them at another, without affecting the original application. The applications can also be run at a user-defined resolution, instead of the display resolution.

### Dynamic Reference Addressing

Data source references can be changed to dynamically address multiple data sources with a single tagname.

### FactoryFocus

FactoryFocus is a view only Runtime version of InTouch 7.11. It gives Managers and Supervisors the ability to view a continuous HMI application process in real time. System security is increased with the view-only capability since no data can be changed. No changes are needed to InTouch applications to use InTouch FactoryFocus.

### QuickFunctions

QuickFunctions are InTouch QuickScripts that can be called from other QuickScripts or animation link expressions. QuickFunctions support parameters and return values. Calling QuickFunctions from other QuickScripts or expressions gives an application developer the power to create a QuickFunction one time and then reuse it over and over again.

### Tagname Cross-Referencing

The Tagname Cross-Referencing utility allows users to determine both tagname and SuperTag usage and in which window or QuickScript that a specific tagname is used. For convenience, the Tagname Cross Reference utility can remain open in WindowMaker while you perform other tasks. It also allows you to view any QuickScript or QuickFunction where a tagname is found. V7.11 includes all Remote references.

### Local Variables

InTouch 7.11 QuickScripts and QuickFunctions support the use of local variables to store temporary results and create complex calculations with intermediate scripting values. Using local variables in QuickScripts and QuickFunctions does not decrease your licensed tagname count.

### Instrument Failure Monitoring

Wonderware InTouch 7.11 supports several new tagname dot fields, including .RawValue, .MinRaw and .MaxRaw. Any operator can now use these tags in InTouch QuickScripts to monitor instrument values to determine out-of-range, out-of-calibration or failure.

### VTQ

Data Value, with associated Timestamp and Quality, of I/O type tagnames provided by an I/O Server. Through standard SuiteLink protocols, the time and quality stamps are available as 19 new dot fields for tags and may be referenced in animation links and scripts.

## INTEGRATION WITH FACTORYSUITE COMPONENTS

InTouch 7.11 functions as the 'universal FactorySuite client', allowing it to be used as a front-end for InTrack™, InBatch, IndustrialSQL Server and InControl and our new DT Analyst™ a downtime tracking and plant efficiency monitoring add-on.

# SPECIFICATIONS

## Hardware Requirements

---

### Minimum:

For NT and Windows 2000 Professional systems:

200 MHz Pentium, 64 MB RAM (see note 1)  
500 MB free hard disk space (see note 2)

For Windows 2000 Server or Windows 2000 Advanced Server systems:

200 MHz Pentium 128 MB RAM (see note 1)  
500 MB free hard disk space (see note 2)

### Recommended:

For NT and Windows 2000 Professional systems:

300 MHz Pentium or greater, a minimum of 128 MB RAM (see note 1)  
1000 MB free hard disk space (see note 2)

For Windows 2000 Server or Windows 2000 Advanced Server:

300 MHz Pentium or greater, a minimum of 256 MB RAM (see note 1)  
1000 MB free hard disk space (see note 2)

### Operating System Required:

MS Windows NT 4.0 SP6 or Windows 2000 SP1 (Professional, Server or Advanced Server). Legacy Operating systems are supported as Terminal Server Clients.

### Languages Supported:

InTouch 7.11 is available in English, French, German, Japanese and Simplified Chinese.

**Note 1:** base requirement must be expanded by 16MB RAM per every 5K tags.

**Note 2:** actual free disk space requirements may be higher depending on your alarm database logging needs.

For additional recommendations, please visit <http://www.wonderware.com>.

Networking: Supports any standard NetBIOS network: Ethernet, Novell, Token Ring, Arcnet, etc. DECnet, Serial and TCP/IP connectivity supported.



© 2001 Wonderware Corporation. All rights reserved. Wonderware, FactorySuite, InTouch and Avantis are registered trademarks of Wonderware Corporation. ActiveFactory, ArchestrA, FactoryOffice, InTrack, InControl, InBatch, IndustrialSQL Server, MaintenanceSuite, QI Analyst, SCADAAlarm, SuiteVoyager and Web Server are trademarks of Wonderware Corporation. Microsoft and Windows NT are registered trademarks of Microsoft Corporation. All other trademarks are the property of their respective owners.



Contact Wonderware or your local Distributor for information about software products for industrial automation.  
Wonderware Corporation • 100 Technology Dr., Irvine, CA 92618 • Tel: (949) 727-3200 • Fax: (949) 727-3270  
[www.wonderware.com](http://www.wonderware.com)